

Question 1

If you see below characters when compiling program:

Lesson3

Infrared Remote Control Car\Infrared_remote_control_car\Infrared_remote_control_car.ino:4:22:
fatal error: IRremote.h: No such file or directory

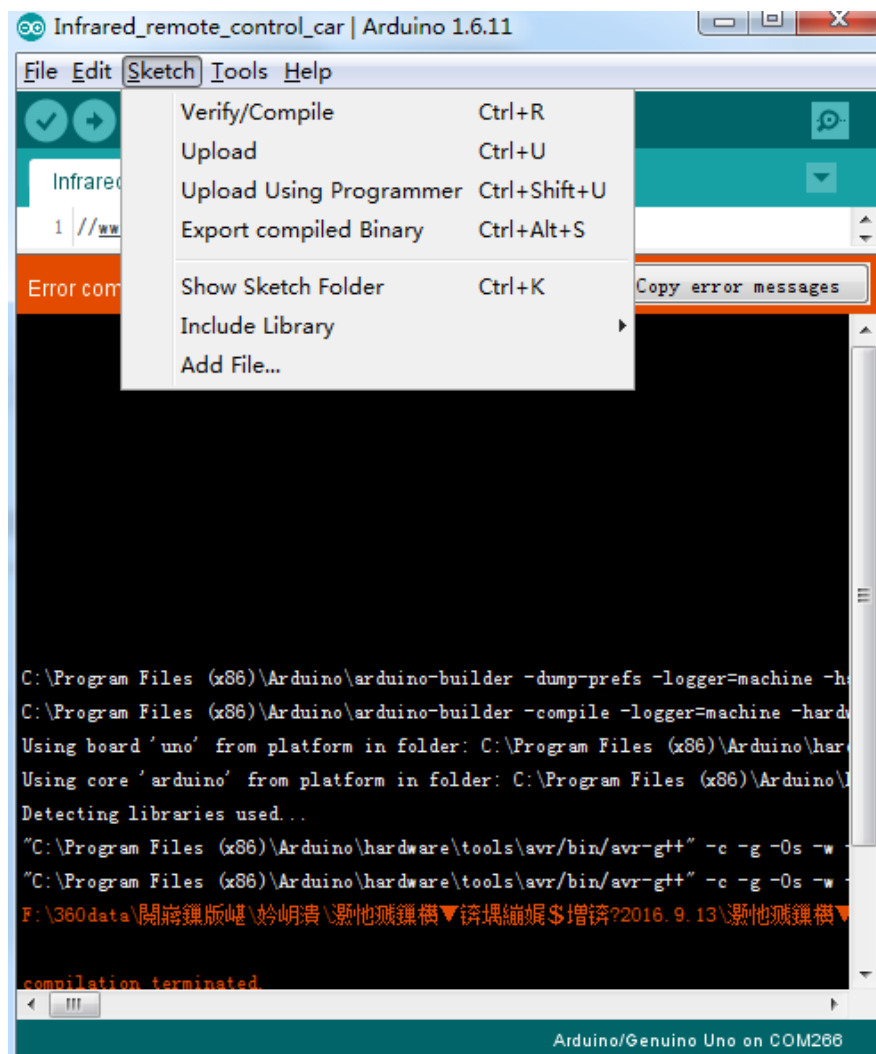
compilation terminated.

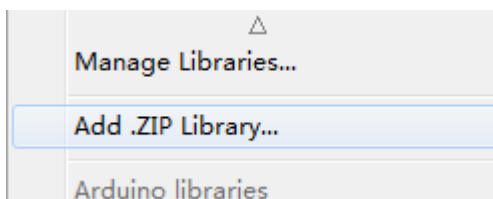
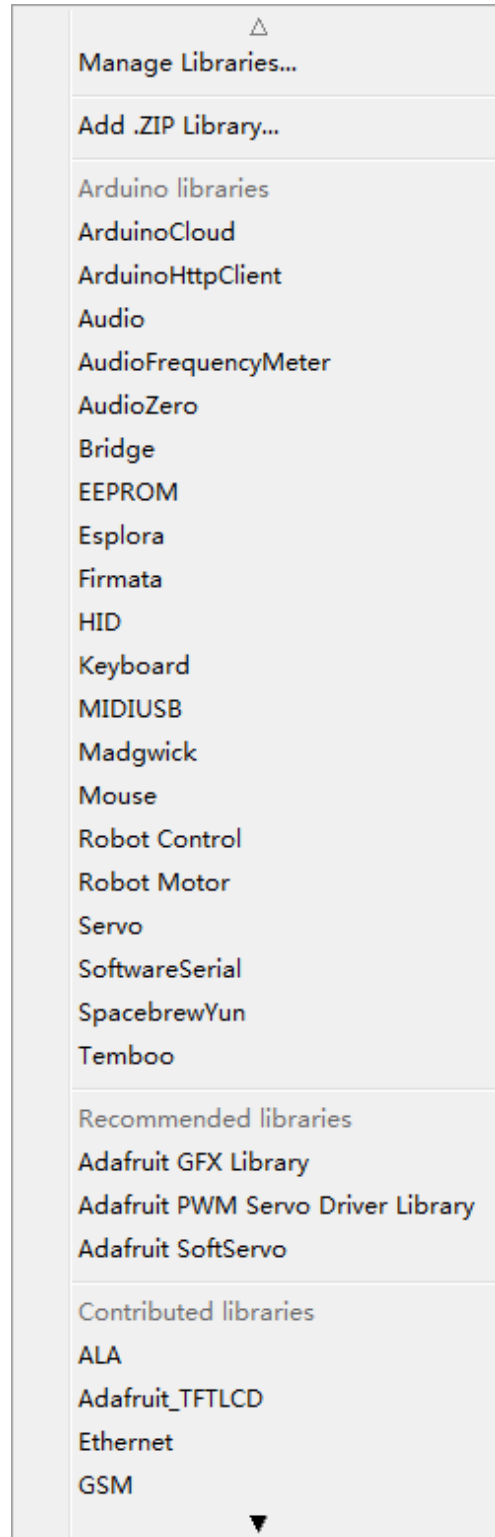
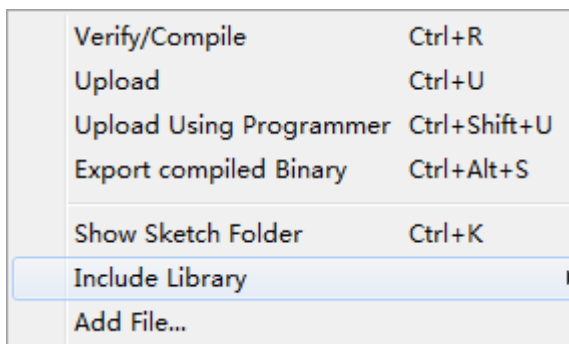
exit status 1

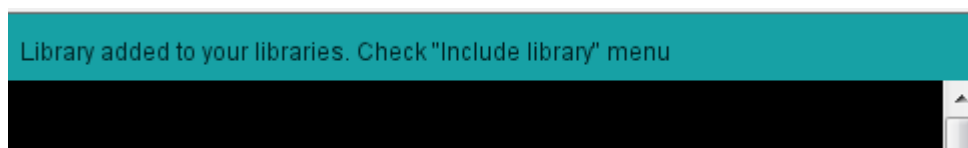
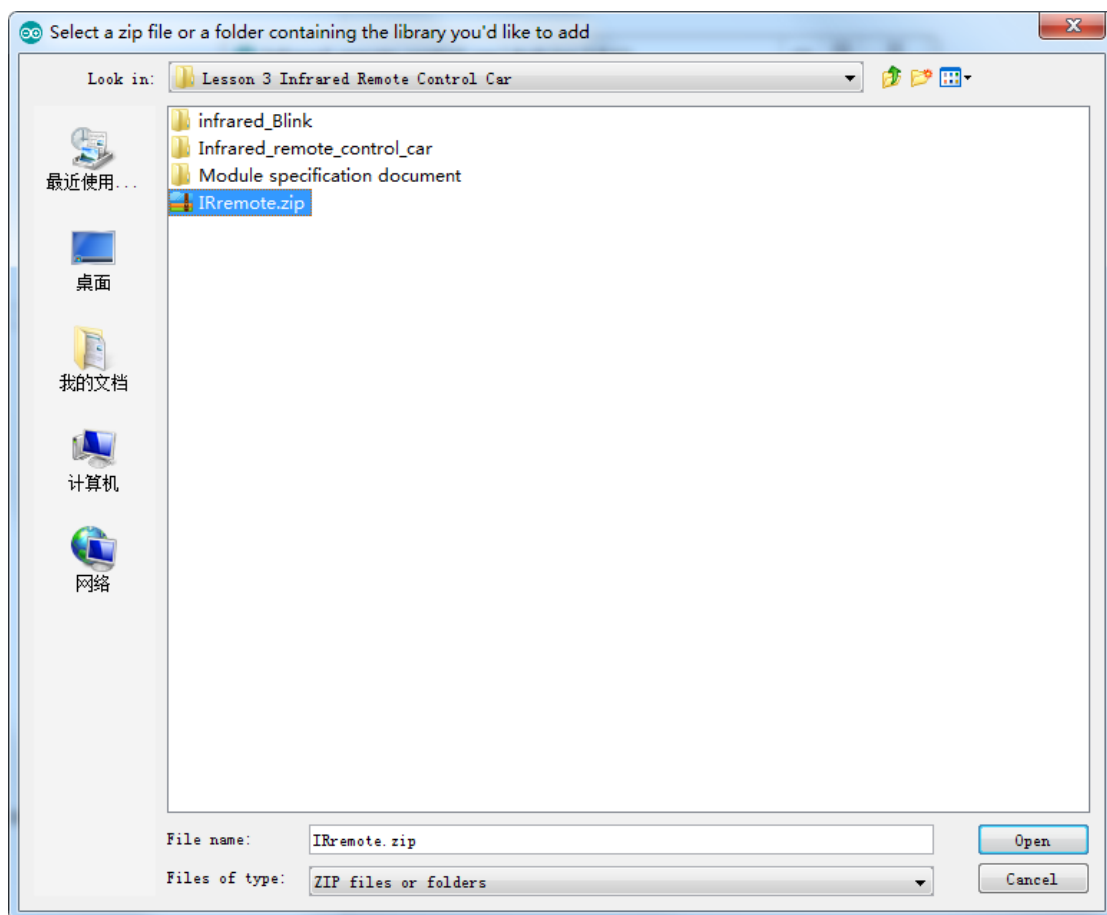
Error compiling for board Arduino/Genuino Uno.

```
permissive -fno-exceptions -ffunction-sections -fdata-sections -fno-threadsafe-statics -flto -w -x c++ -E -CC -mmcu=atmega328p -DF_CPU=16000000L -DARDUINO=1061  
Lesson 3 Infrared Remote Control Car\Infrared_remote_control_car\Infrared_remote_control_car.ino:4:22: fatal error: IRremote.h: No such file or directory
```

It means you didn't load up the correct library, which you can find in our material in CD and the right procedures to load up are as follow:







Restart IDE then you can compile the program successfully.



Question 2

If you see below characters when compiling program,

```
C:\Program Files (x86)\Arduino\libraries\RobotIRremote\src\IRremoteTools.cpp:5:16: error:
'TKD2' was not declared in this scope
```

```
int RECV_PIN = TKD2; // the pin the IR receiver is connected to
```


```
^
```

Using library RobotIRremote at version 1.0.2 in folder:

```
C:\Program Files (x86)\Arduino\libraries\RobotIRremote
```

```
exit status 1
```

Error compiling for board Arduino/Genuino Uno.



```
Error compiling for board Arduino/Genuino Uno.
Copy error messages
"C:\Program Files (x86)\Arduino\hardware\tools\avr\bin\avr-g++" -c -g -Os -w -std=gnu++11 -fpermissive -fno-exceptions
Generating function prototypes...
"C:\Program Files (x86)\Arduino\hardware\tools\avr\bin\avr-g++" -c -g -Os -w -std=gnu++11 -fpermissive -fno-exceptions
"C:\Program Files (x86)\Arduino\tools-builder\ctags\5.8-arduino10\ctags" -u --language-force=c++ -f - --c++-kinds=sv
Compiling sketch...
"C:\Program Files (x86)\Arduino\hardware\tools\avr\bin\avr-g++" -c -g -Os -std=gnu++11 -fpermissive -fno-exceptions
Compiling libraries...
Compiling library "RobotIRremote"
"C:\Program Files (x86)\Arduino\hardware\tools\avr\bin\avr-g++" -c -g -Os -std=gnu++11 -fpermissive -fno-exceptions
"C:\Program Files (x86)\Arduino\hardware\tools\avr\bin\avr-g++" -c -g -Os -std=gnu++11 -fpermissive -fno-exceptions
C:\Program Files (x86)\Arduino\libraries\RobotIRremote\src\IRremoteTools.cpp:5:16: error: 'TKD2' was not declared in
int RECV_PIN = TKD2; // the pin the IR receiver is connected to
^
Using library RobotIRremote at version 1.0.2 in folder: C:\Program Files (x86)\Arduino\libraries\RobotIRremote
exit status 1
Error compiling for board Arduino/Genuino Uno.
```

It means there is an old library in your IDE——RobotIRremote, and there is a file in it which is <IRremoteTools.cpp>. When compiling program in IDE, it will use the old version IRremoteTools .cpp first, which could lead to some errors and there are 2 solutions in general:

1. Load up the new library as instructed in Question 1 and restart IDE then IT will use the new library to compile the program.
2. If the first solution doesn't work, then go to the Arduino library folder and delete RobotIRremote. You can find its directory path in the error info like the one above C:\Program Files (x86)\Arduino\libraries\RobotIRremote. Find it, delete it and compile the program again then you can run the program without any issues.

```
Using library IRremote in folder: F:\360data\重要数据\我的文档\Arduino\libraries\IRremote (legacy)
```

```
Sketch uses 7,308 bytes (22%) of program storage space. Maximum is 32,256 bytes.
```

```
Global variables use 459 bytes (22%) of dynamic memory, leaving 1,589 bytes for local variables. Maximum is 2,048 bytes.
```